

# COMMERCIAL FUEL SYSTEMS

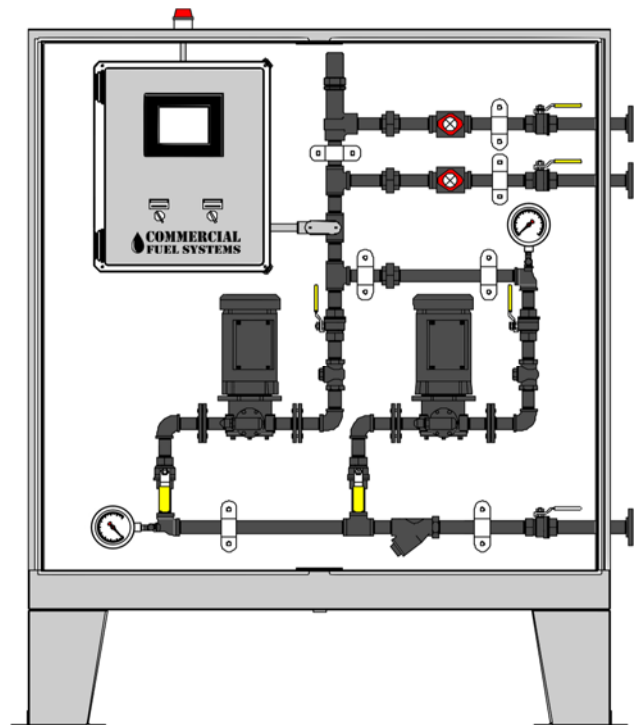
## Fuel Pump Package - EDPS Series

Commercial Fuel Systems outdoor fuel transfer packages are designed for years of reliable service in the most demanding environments. Hospitals, Data Centers, Financial Centers and Institutional/Research facilities all have stringent requirements for reliability and maintaining uptime. Years of experience in these mission critical environments is what drives our designs, features and material selection.

Our systems feature robust materials, fully isolatable transfer pumps for redundancy, flow proving, pressure regulation, visual indicators and gauges on suction and discharge piping for quick and thorough system assessment. In addition, we have incorporated features that will allow the operator to manually operate pumps under emergency conditions. The control system architecture is based on each panel operating as a stand-alone unit, should the main panel go down, the system will alarm, the supply pump can be taken into HAND safely and the day tanks will continue to operate automatically.

### Features

- Minimum NEMA 3R Components
- Integral UL 508a Controller w/ Graphical Interface
- Graphics for Local And Day Tank System Status
- Local and Remote BAS A/V Alarming
- HOA's For Each Pump
- 100% Redundant Pumps w/ Isolation Valves
- Integral Safety Relief Valves on Each Pump
- Adjustable System Pressure Regulator
- Flow Proving w/ Automatic Changeover
- Visual Flow Indicators for Operational Assessment
- Inlet and Outlet Pressure Gauges w/ Isolation Valves
- Inlet Strainer with Local Isolation Valve
- 100% Steel Piping System, No Hoses
- Flanged Field Connections
- S.S. Outdoor Enclosure, Containment & Leak Sensor
- Industrial Paint System
- BAS Interface Indicating Complete System Status, Available via Modbus or BACnet



Interior View

Note: Refer to the DPS series for indoor applications.



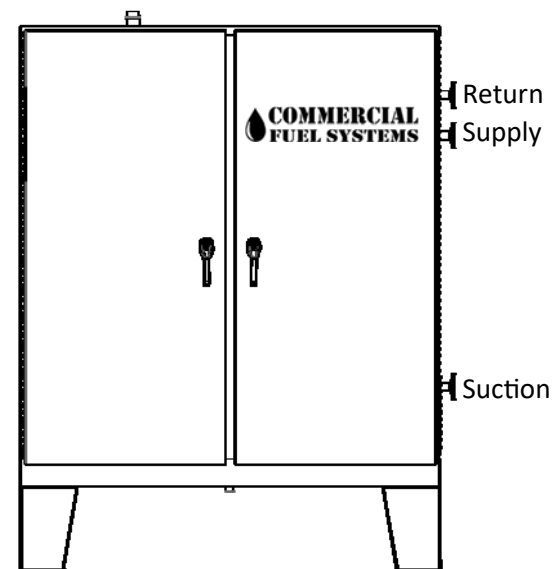
# **COMMERCIAL FUEL SYSTEMS**

## Fuel Pump Package - EDPS Series

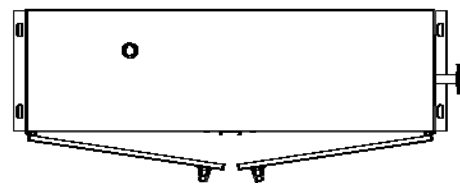
Model	Flow (GPH)	Pressure (PSI)	Maximum Pressure	Motor HP	Electrical	Field Connection	Dimensions (LXWXH)	Support Capacity Generator KW / Boiler HP
EDPS-420	420	50	100	3/4	120V/1Ph	1"	60"X18"X60"	≤ 5,000 / 350
EDPS-600	600	50	100	3/4	120V/1Ph	1"	60"X18"X60"	≤ 7,000 / 550
EDPS-900	900	50	100	1	480V/3Ph	1-1/2"	60"X18"X60"	≤ 10,000 / 800
EDPS-1200	1200	50	100	1-1/2	480V/3Ph	1-1/2"	60"X18"X60"	≤ 13,500 / 1,000
EDPS-1800	1800	50	100	2	480V/3Ph	1-1/2"	60"X24"X60"	≤ 20,000 / 1,600

### Notes:

1. Custom Systems Available Upon Request
2. Higher Pressures Available Upon Request
3. Alternate Voltages Available Upon Request
4. Package Size Subject to Change
5. Support Capacity is for Quick Reference, Consult Factory for Project Specific Calculations
6. Information is Based on Diesel/No.2 Fuel Oil Service, Consult Factory for Other Fluids
7. Please refer to the DPS series for indoor applications



Front View



Top View—Allow 36" For Door Swing